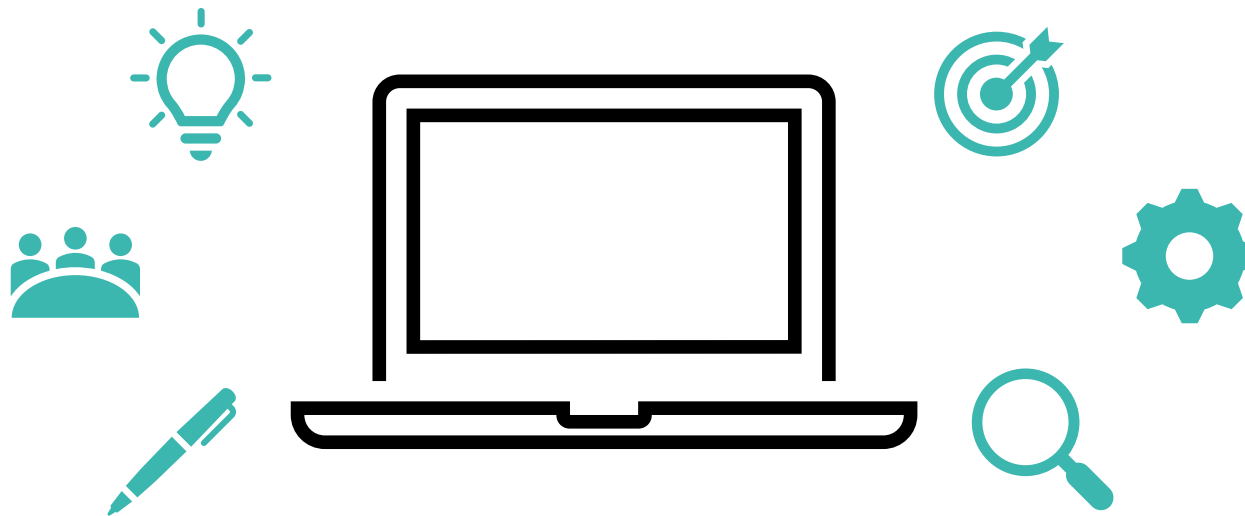


# NHS Scotland Complaints Handling Procedure

## Public Facing Model: Quick Guide



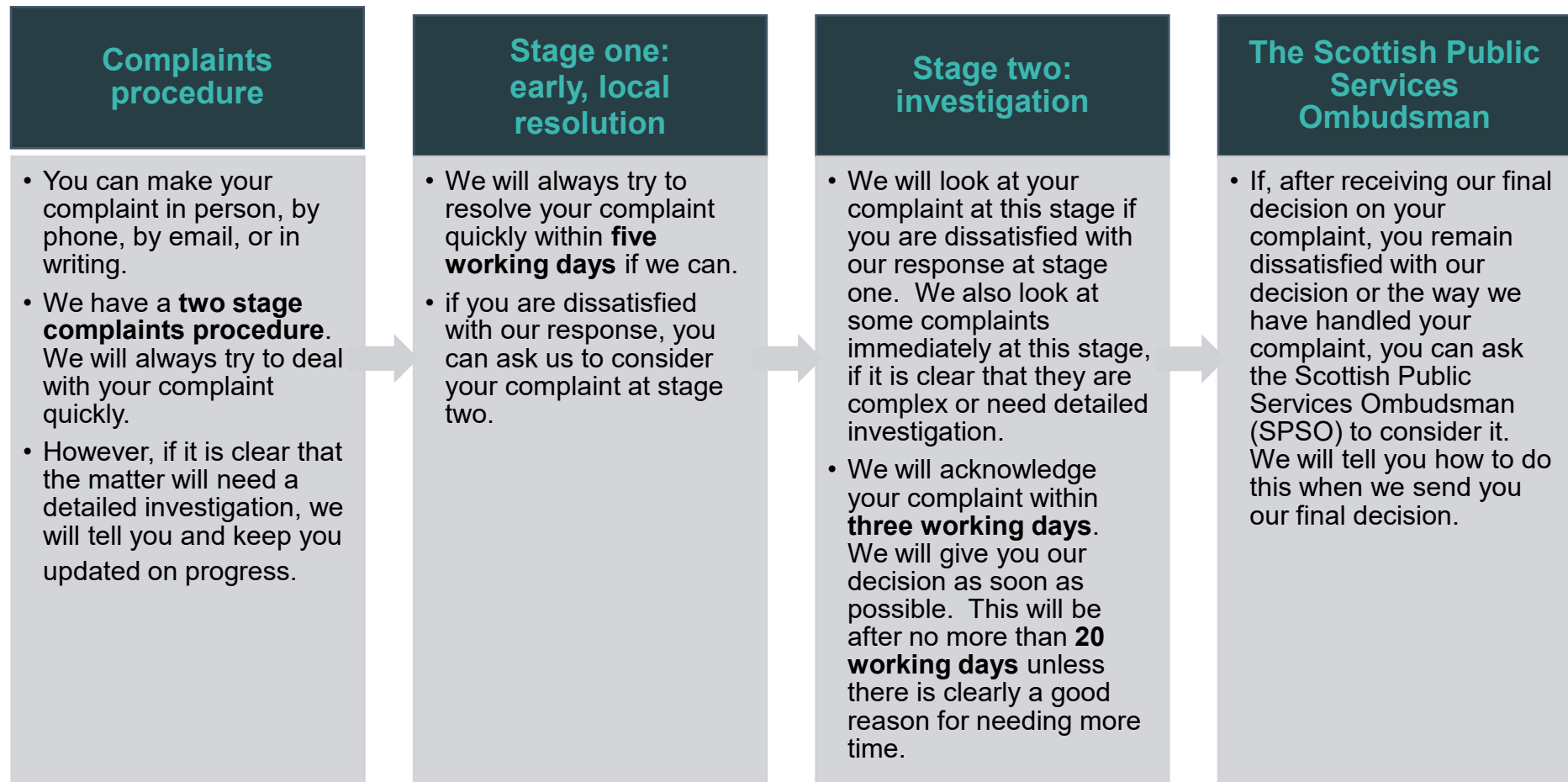
## Contents

---

1. Quick guide to the NHS complaints handling procedure.....	3
2. NHS Education for Scotland’s complaints handling procedure.....	4
3. Guidance .....	5
4. Getting help to make your complaint.....	9
5. Our contact details .....	10

## 1. Quick guide to the NHS complaints handling procedure

---



## 2. NHS Education for Scotland's complaints handling procedure

---

NHS Education for Scotland (NES) is committed to providing education, training and workforce development for the NHS and the social care workforce, to support high quality care and treatment to people in our communities through the delivery of safe, effective and person-centred care.

We understand, however, that sometimes things can go wrong. If you are dissatisfied with something we have done, or have not done, please tell us and we will do our best to put things right. If we cannot resolve matters in the way you want, we will explain why it is not possible to do as you suggest.

**This leaflet tells you about our complaints procedure and how to make a complaint. It includes information about what you can expect from us when we are dealing with your complaint.**



### 3. Guidance

---

#### What is a complaint?

We regard a complaint as: Any expression of dissatisfaction about our action or lack of action, or about the standard of service provided by us, or on our behalf.

If you need to complain about something, we encourage you to do so. We also understand that your complaint may involve more than one NHS body or service, or relate to both health and social care services. Alternatively, it may be about someone working on our behalf. Our complaints procedure covers all these possibilities.

#### Who can complain?

Anyone can make a complaint to us. You can complain directly to us, or if you would rather have someone make the complaint on your behalf, we can deal with your representative. This could be a relative, a carer, a friend or any other person that you choose. If you agree to someone making the complaint on your behalf, it is important for you to know that we will need to ask for your permission for us to deal with that person.

#### What can I complain about?

You can complain about things like:

- A failure to provide a service.
- An inadequate standard of service.
- A lack of information and clarity.
- Difficulty in making contact with us.
- Treatment by – or attitude of – a member of our staff.
- Environmental or domestic issues.
- Operational and procedural issues.
- Our failure to follow the appropriate process.
- Your dissatisfaction with our policy.

**We realise that it is not possible to list everything that you can complain about. If you want to complain about something that we have not listed above, then we encourage you to do so.**



### What cannot I complain about?

There are some things that we cannot deal with through our complaints handling procedure. These include:

- Matters relating to services not provided by, or funded by, the NHS.
- A previously concluded complaint or a request to have a complaint reconsidered, where we have already given our final decision.
- A complaint made by an employee of the NHS Board or health service provider or other person in relation to their employment contract.
- A complaint that is being, or has been, investigated by the Scottish Public Services Ombudsman (SPSO).
- A complaint arising from a suggested failure to comply with a request for information under the Freedom of Information Act.
- A complaint about which you have commenced legal proceedings or have clearly stated that you intend to do so, rather than pursue the matter using the NHS complaints procedure.

**We also realise that it is not possible to list everything that you cannot complain about. If other procedures can help you to resolve your concerns, then we will give you information and advice to help you.**



### How do I complain?

You can complain in person at the place where you have received care, treatment or advice, or where the incident that you want to complain about happened. You can also complain by phone, in writing, by email or by using our complaints form.

Wherever possible, we encourage you to speak with a member of staff. It is easier for us to resolve complaints if you make them quickly and directly to the service concerned. So, please talk to a member of our staff at the service you are complaining about. They will always try to resolve any problems on the spot if it is possible to do so.

When complaining, please tell us:

- Your full name, email address and address.
- The full name, address and date of birth of the person affected (if you are complaining on behalf of somebody else).
- When did this happen.
- Where did this happen.
- How you want us to resolve the matter.

**Giving us this information will help us to clearly identify the problem and what we need to do to resolve matters.**



### How long do I have to make a complaint?

Normally, you must make your complaint within six months of:

- The event you want to complain about; or
- Finding out that you have a reason to complain, but no longer than 12 months after the event itself.

In exceptional circumstances, we may be able to accept a complaint after the time limit. If you feel that the time limit should not apply to your complaint, please tell us why. If we decide that, because of the time that has passed since the incident occurred, we cannot consider your complaint, you can ask the SPSO to review our decision.

### What happens when I have complained?

We will always tell you who is dealing with your complaint. Our complaints procedure has two stages:

- Stage one – early, local resolution.
- Stage two – investigation.

#### Stage one – early, local resolution

We aim to resolve complaints quickly and close to where we provided the service. Where appropriate, this could mean an on-the-spot apology and explanation if something has clearly gone wrong, and immediate action to resolve the problem.

Sometimes we will have to make some enquiries before we can respond to your complaint. We will give you our decision at stage one in five working days or less unless there are exceptional circumstances.

If we cannot resolve your complaint at this stage, we will explain why and tell you what you can do next. We might suggest that you take your complaint to stage two. You may choose to do this immediately or sometime after you get our initial decision.

## Stage two – investigation

Stage two deals with two types of complaints: those that have not been resolved at stage one and those that are complex and require detailed investigation.

When using stage two we will:

- Acknowledge receipt of your complaint within three working days.
- Where appropriate, discuss your complaint with you to understand why you remain dissatisfied and what outcome you are looking for.
- Give you a full response to the complaint as soon as possible and within 20 working days.

**If our investigation will take longer than 20 days, we will tell you. We will agree revised time limits with you and keep you informed on progress.**



## What if I am still dissatisfied?

If you are still dissatisfied with our decision or the way in which we have dealt with your complaint when we have sent you our full response, you can the SPSO to look at it.

The SPSO cannot normally look at:

- A complaint that has not completed our complaints procedure, so please make sure it has done so before contacting the SPSO.
- Events that happened, or that you became aware of, more than a year ago.
- A matter that has been, or is being, considered in court.

You can contact the SPSO:

- In person: SPSO, Bridgeside House, 99 McDonald Road, Edinburgh, EH 7 4NS.
- Freepost: You can request a Freepost envelope by calling 0800 377 7330 or via the contact form.
- Freephone: 0800 377 7330.
- Online contact: <https://www.spsso.org.uk/contact-us>
- Website: <https://www.spsso.org.uk/>



## 4. Getting help to make your complaint

---

We understand that you may be unable, or reluctant, to make a complaint yourself. We accept complaints from a representative, if you have given your permission for us to deal with them. We can take complaints from a friend, relative, or an advocate, if you have given them your consent to complain for you.

The Patient Advice and Support Service (PASS) is an organisation that provides free and confidential advice and support to patients and other members of the public in relation to NHS Scotland. The service promotes an awareness and understanding of the rights and responsibilities of patients and can advise and support people who wish to make a complaint about the NHS. Further information and contact details can be found on the PASS website: <https://pass-scotland.org.uk/>.

We are committed to making NHS services easy to use for all members of the community. In line with our statutory equalities' duties, we will always ensure that reasonable adjustments are made to help you to access and use our services. If you have any difficulties putting your complaint in writing, or want this information in another language or format, then tell us in person, or contact us on 0131 656 3200 or email us at [complaints@nes.scot.nhs.uk](mailto:complaints@nes.scot.nhs.uk).

## 5. Our contact details

---

Please contact us by the following means:



In writing:  
Complaints Team  
Planning, Performance and Transformation Directorate  
Third floor  
NHS Education for Scotland  
Westport 102  
Edinburgh EH3 9DN



By email: [complaints@nes.scot.nhs.uk](mailto:complaints@nes.scot.nhs.uk)



By phone: 0131 656 3200



Online: [Online complaints form](#)

**We can also give you this leaflet in other languages and formats (such as large print, audio and Braille).**





NHS Education for Scotland  
Westport 102  
West Port  
Edinburgh EH3 9DN  
Tel: 0131 656 3200

[www.nes.scot.nhs.uk](http://www.nes.scot.nhs.uk)

August 2025