

AIM

1

The aim of this service evaluation is to gain an understanding of practitioners' experiences of the pre-registration nurse practice supervisor (PS) and practice assessor (PA) roles following implementation of the Standard for Student Supervision and Assessment (SSSA) (Nursing and Midwifery Council [NMC], 2018a) within a local health board



BACKGROUND

2

The NMC (2018a)* SSSA has brought changes to the roles that support pre-registration student nurses in the practice learning environment (PLE). Inconsistencies have been observed by the researcher in their role as Practice Education Facilitator regarding the way in which the PS and PA roles are implemented across PLEs



METHOD

3

This evaluative study adopted a purposive sampling approach. Six nurses, all of whom had experience of the PS and PA role were interviewed. The semi-structured interviews were recorded via Microsoft teams and qualitative data was transcribed verbatim. Audio data only, was used and analysed using reflexive thematic analysis (Braun and Clarke, 2019a)



FINDINGS

4

- lack of role clarity
- PLEs continue to adopt mentorship approaches
- quality practice supervision and practice assessment was perceived as more challenging in inpatient acute areas
- education is required to support the PS and PA role

"I think it's been treated as just a name change..."

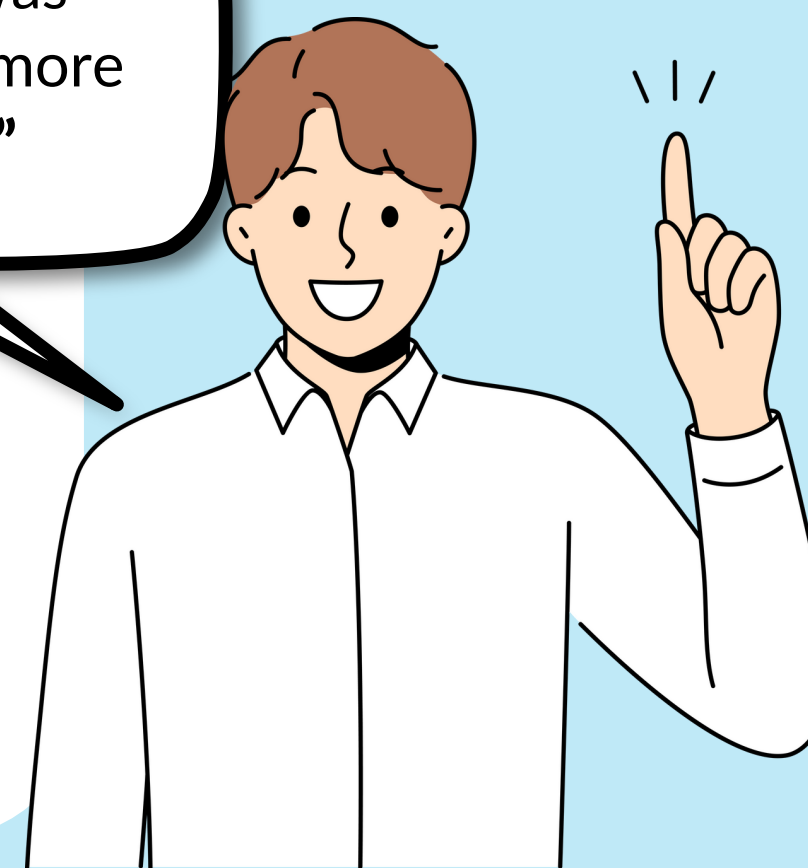
"I don't think that I was prepared, more so for the paperwork"

"When I worked in the wards, it was sometimes more difficult"

RECOMMENDATIONS

5

- further work is required to clarify the PS and PA role
- collaboration with practice learning partners and allied educational institutions to identify a plan for implementing the PS and PA role
- protected time for PS and PA education
- a move from a mentoring to coaching approach for pre-registration nurse education



References

- Braun, V. and Clarke, V. (2019a) 'Reflecting on reflective thematic analysis', *Qualitative Research in Sport, Exercise and Health*, 11(4), pp. 589-597. Available at: <https://doi.org/10.1080/2159676X.2019.1628806>
- Nursing and Midwifery Council. (2018a) Standards for student supervision and assessment. Available at: <https://www.nmc.org.uk/globalassets/sitedocuments/standards-of-proficiency/standards-for-student-supervision-and-assessment/student-supervision-assessment.pdf> (Accessed: 6 November 2022).
- Nursing and Midwifery Council. (2023a) Standards for student supervision and assessment. Available at: Standards for student supervision and assessment - The Nursing and Midwifery Council (nmc.org.uk) (Accessed: 24 April 2023).

*The NMC republished the SSSA in 2023, postdating this service evaluation. For this reason, the original publication has been used throughout. All information remains relevant at time of writing.