

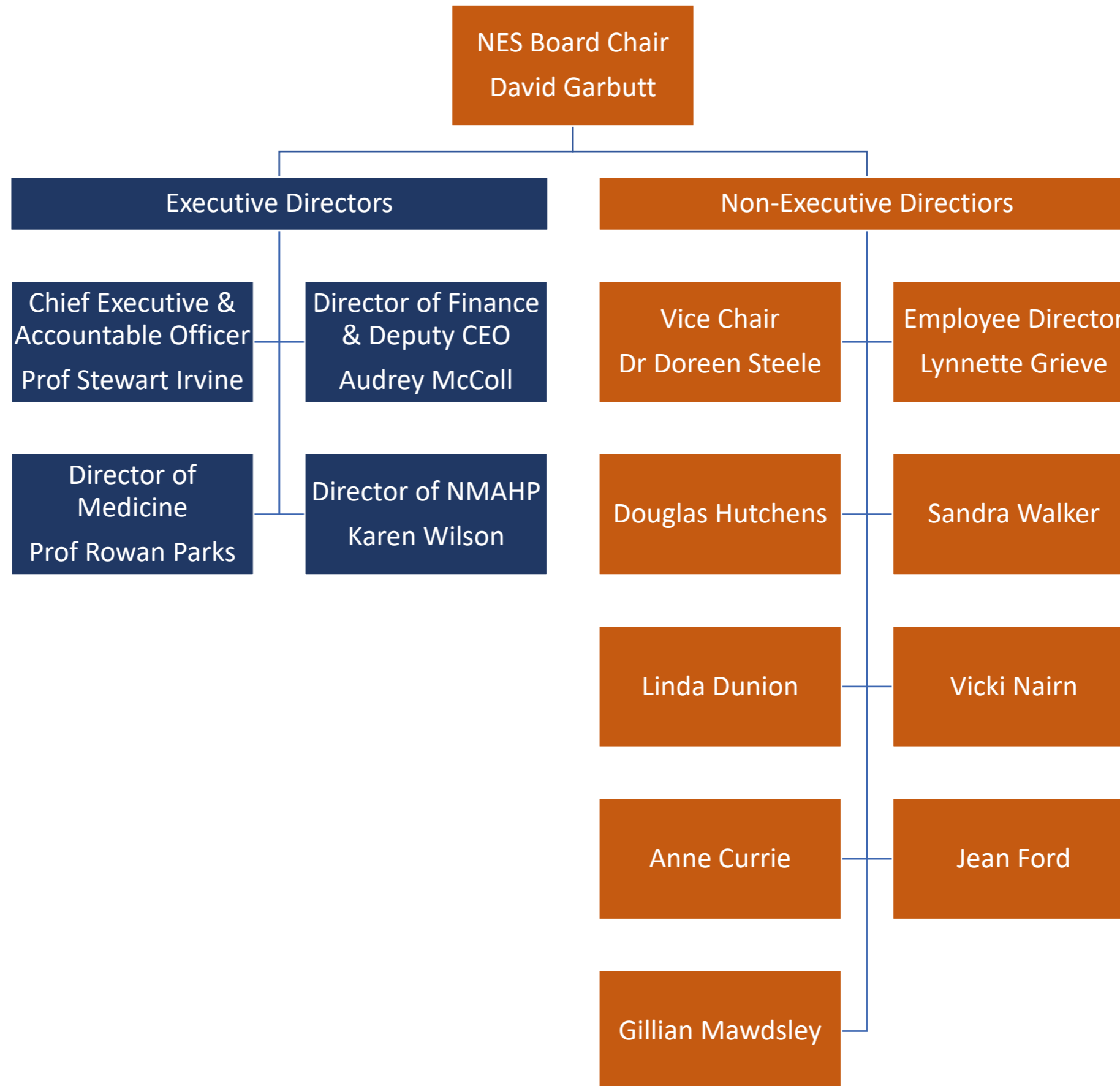
NHS Education for Scotland: Organisational Chart

www.nes.scot.nhs.uk

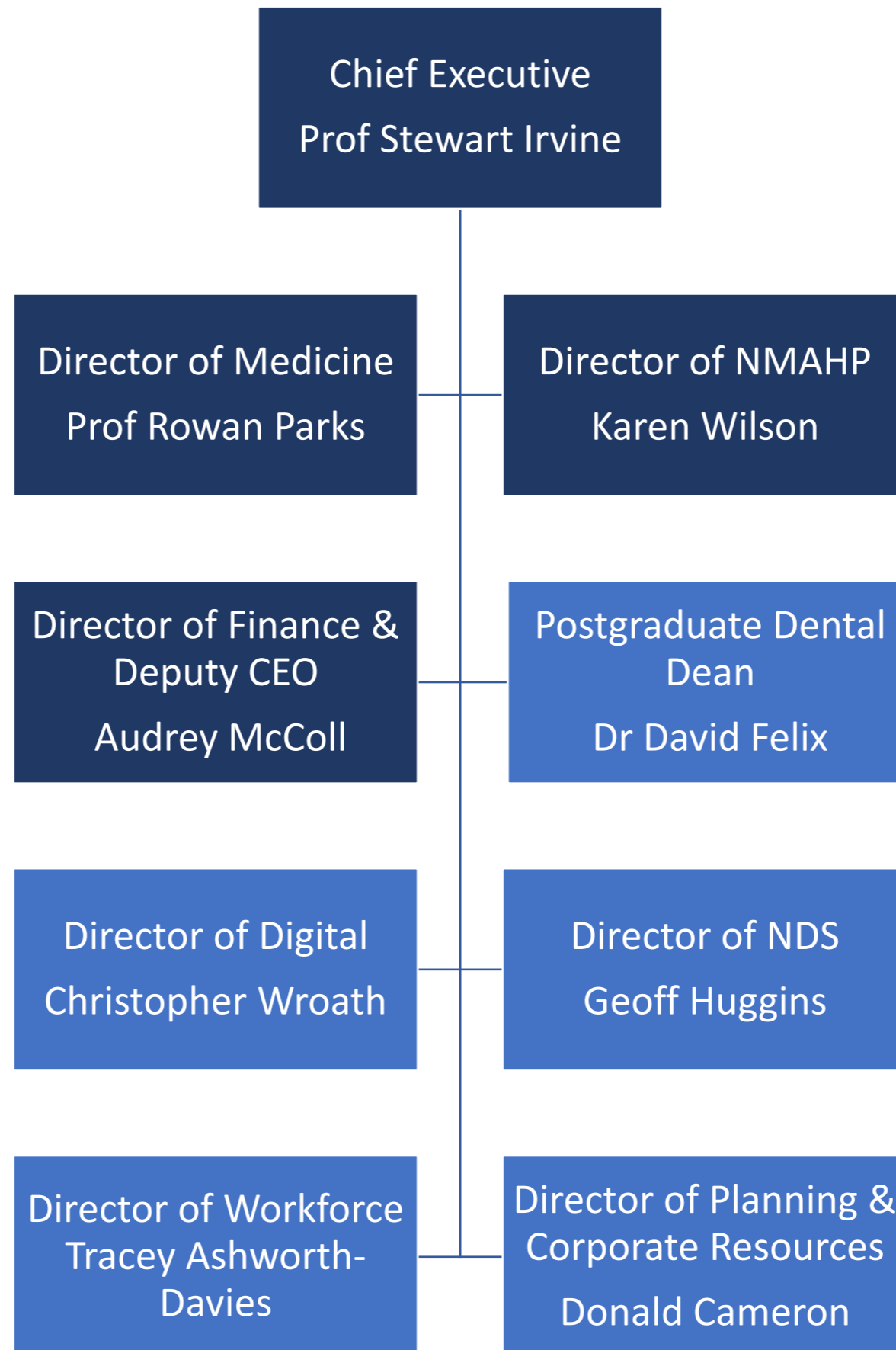
- 1 [NES Board](#)
- 2 [NES Executive Team](#)
- 3 [NES Overview](#)
- 4 [Medical Directorate](#)
- 5 [Pharmacy Directorate](#)
- 6 [NMAHP Directorate](#)
- 7 [Psychology Directorate](#)
- 8 [Dental Directorate](#)
- 9 [Digital Directorate](#)
- 10 [NES Digital Service](#)
- 11 [Finance Directorate](#)
- 12 [Planning & Corporate Resources Directorate](#)
- 13 [Workforce Directorate](#)



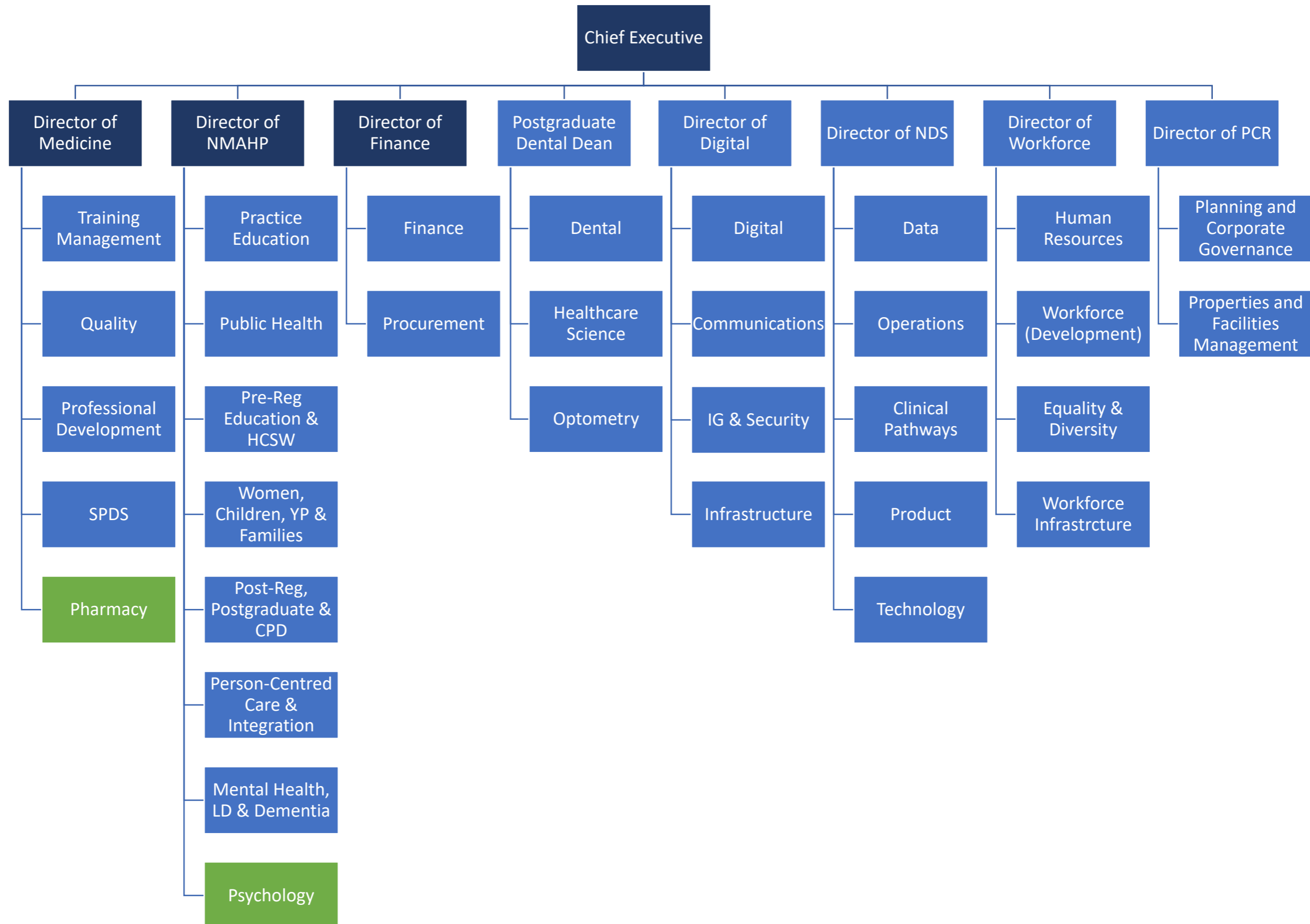
NES Org Chart : NES Board



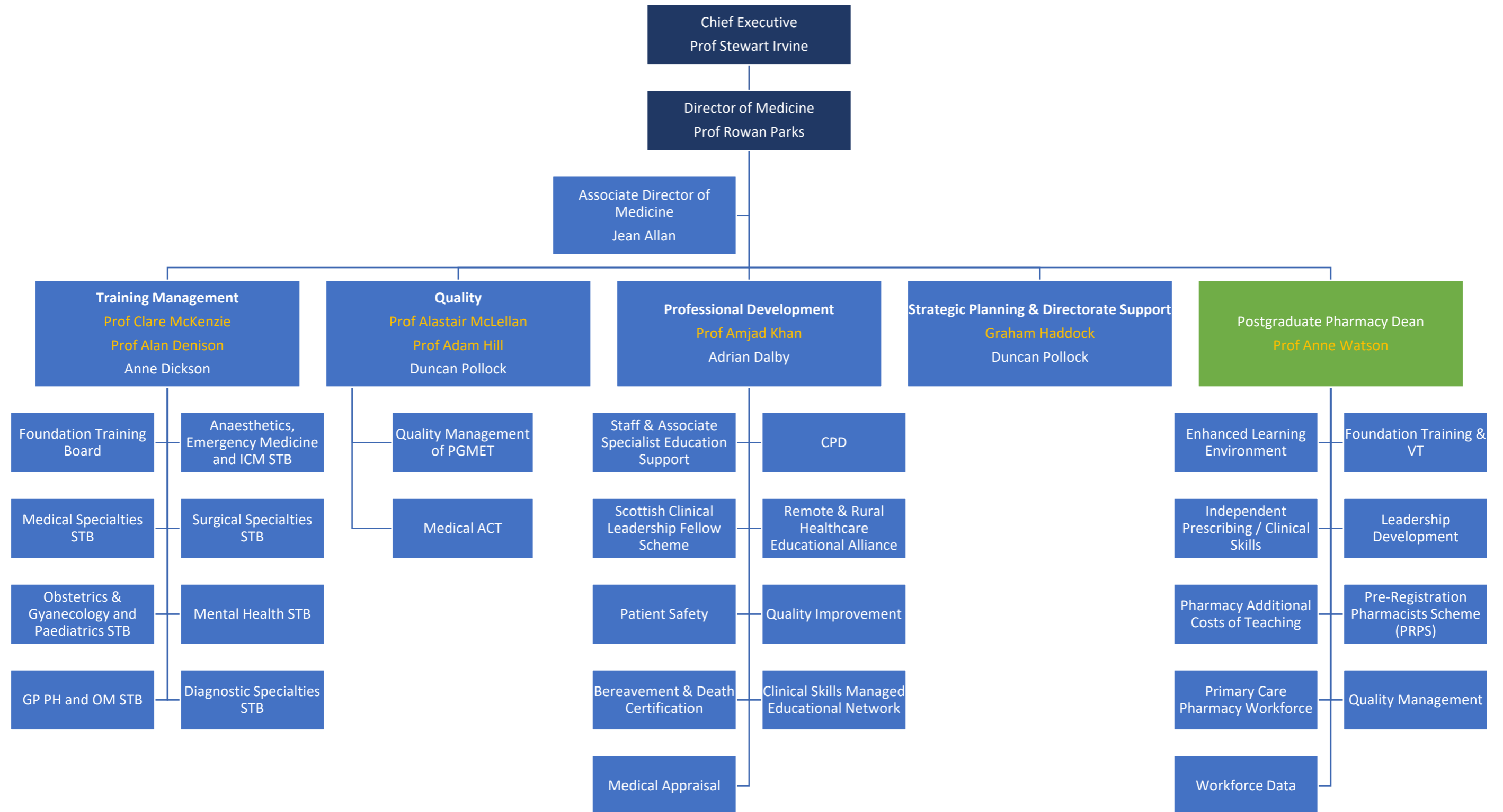
NES Executive Team



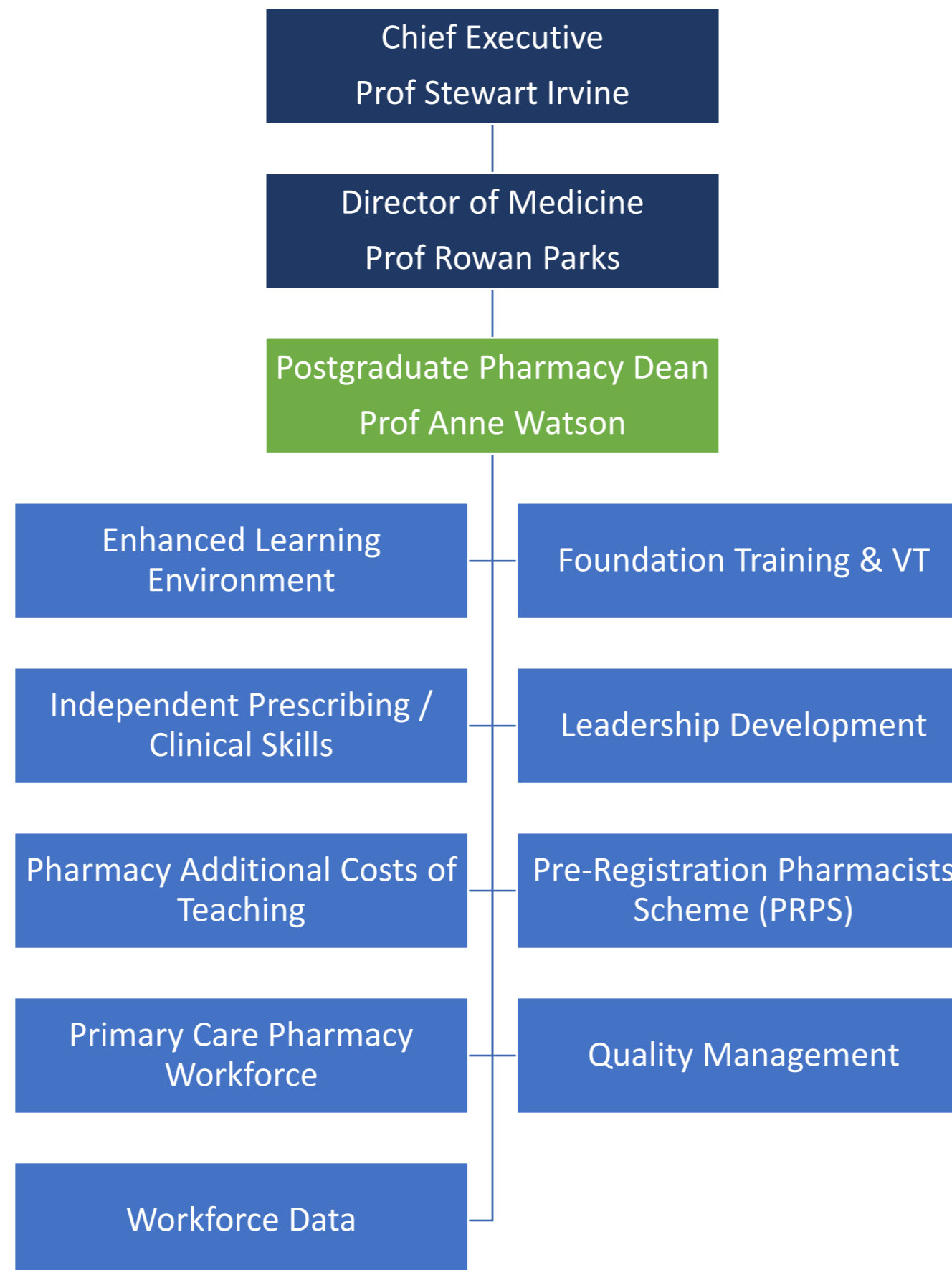
NES Org Chart : Overview



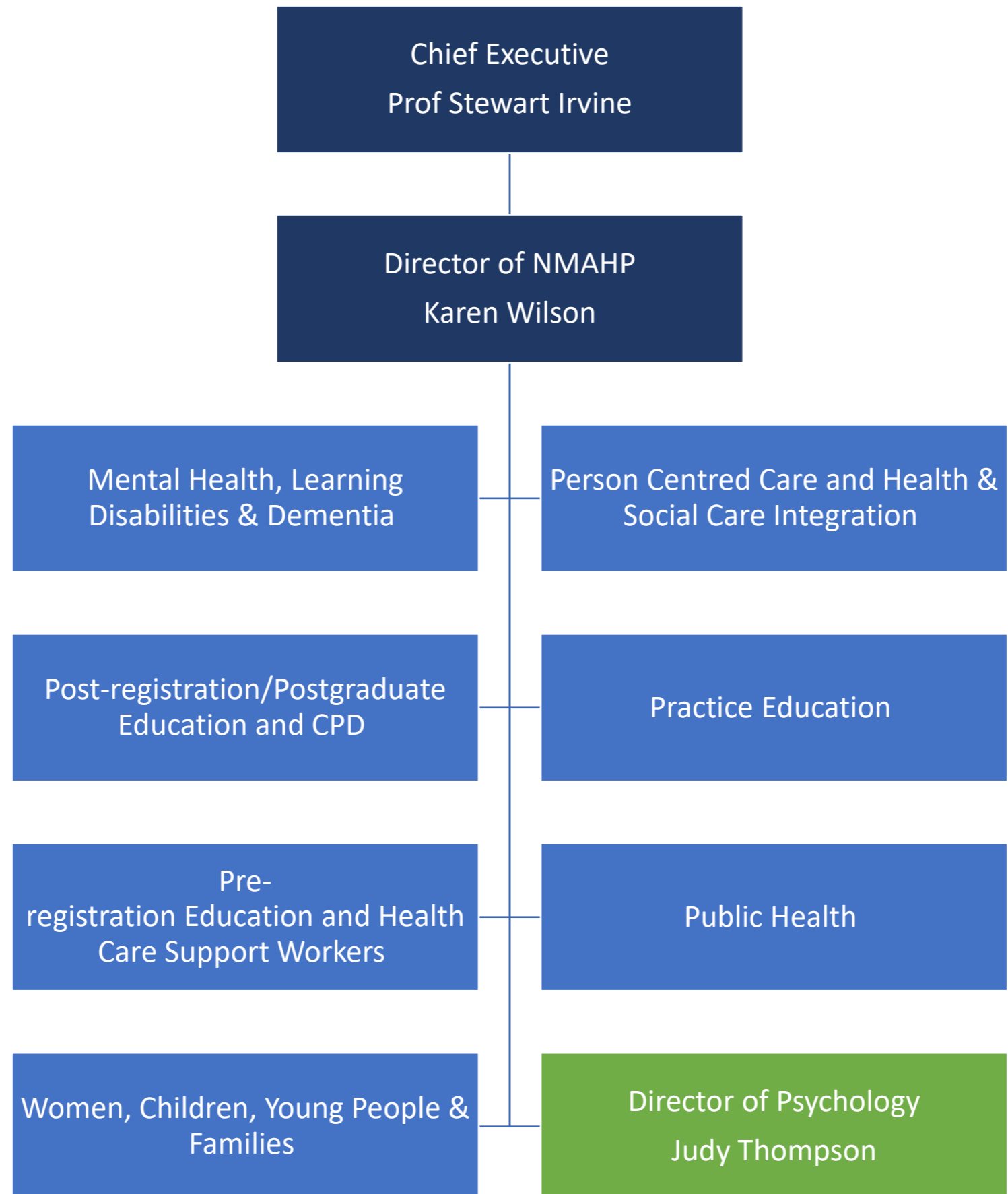
Medical Directorate



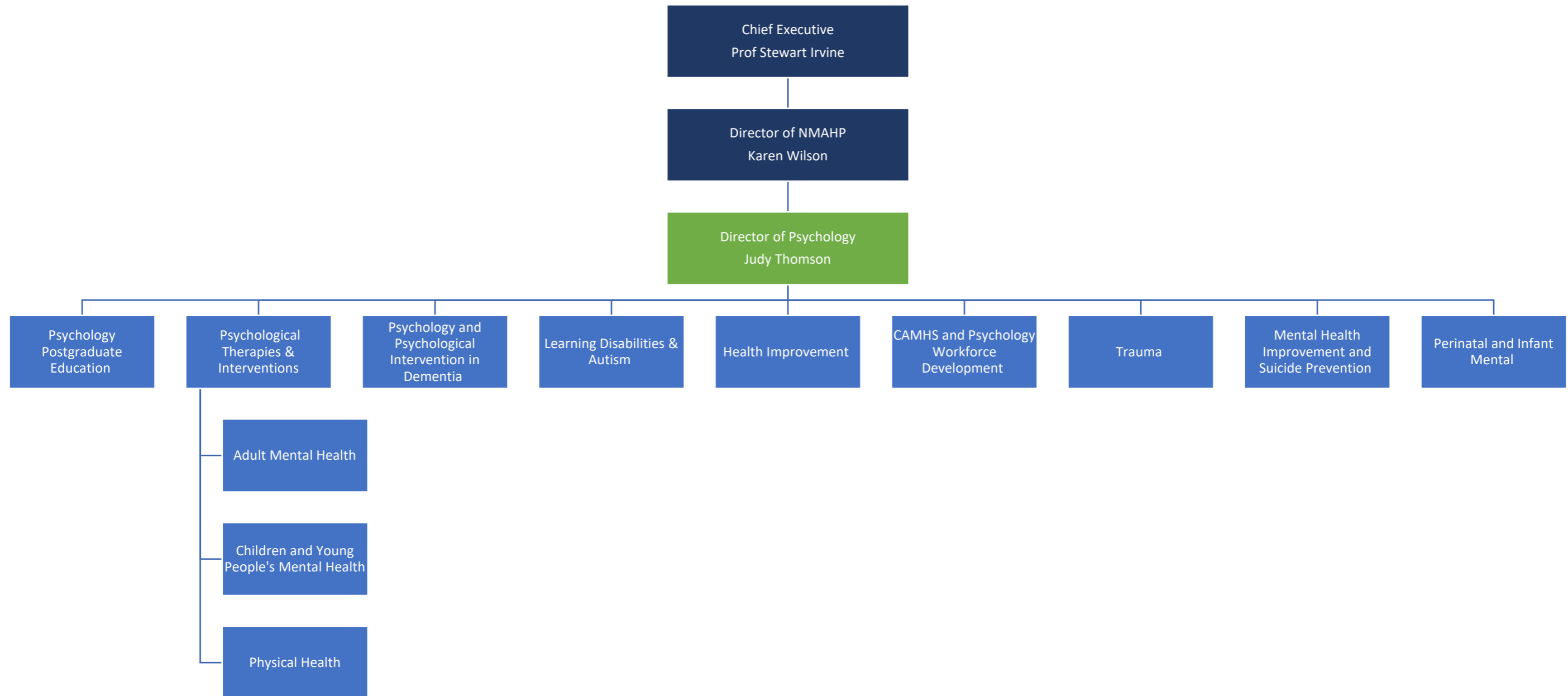
Medicine / Pharmacy Directorate



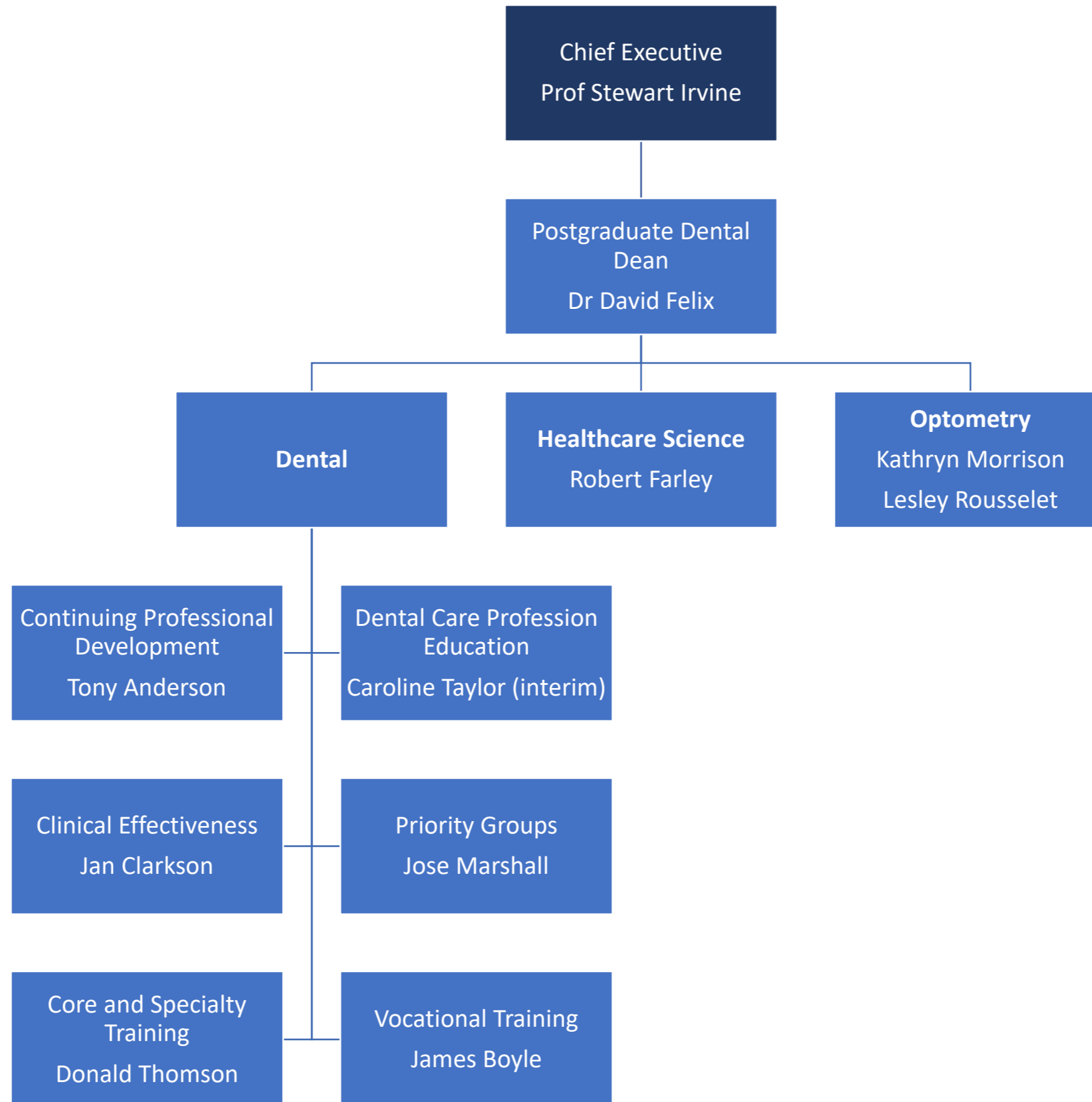
NMAHP Directorate



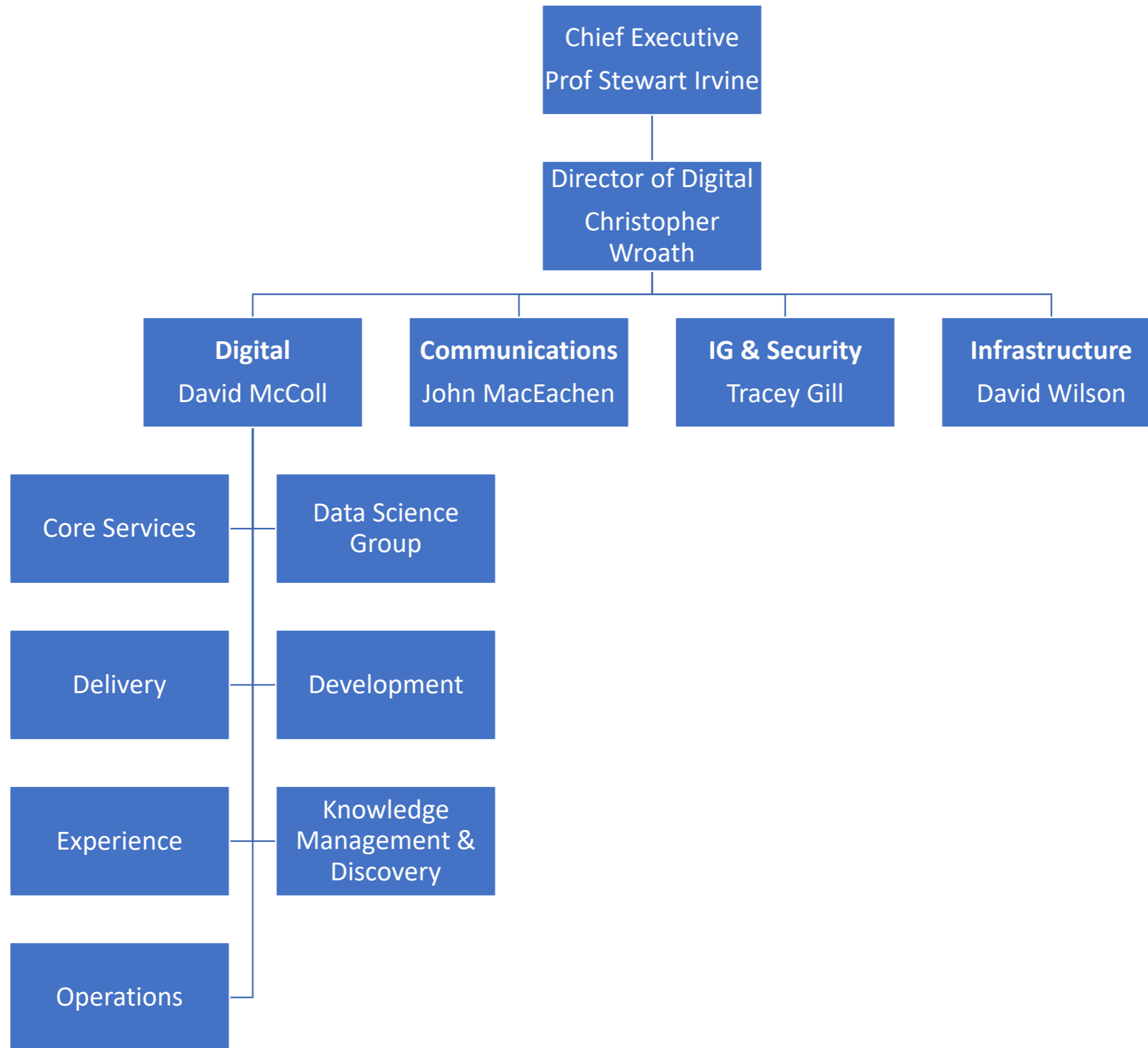
NMAHP / Psychology Directorate

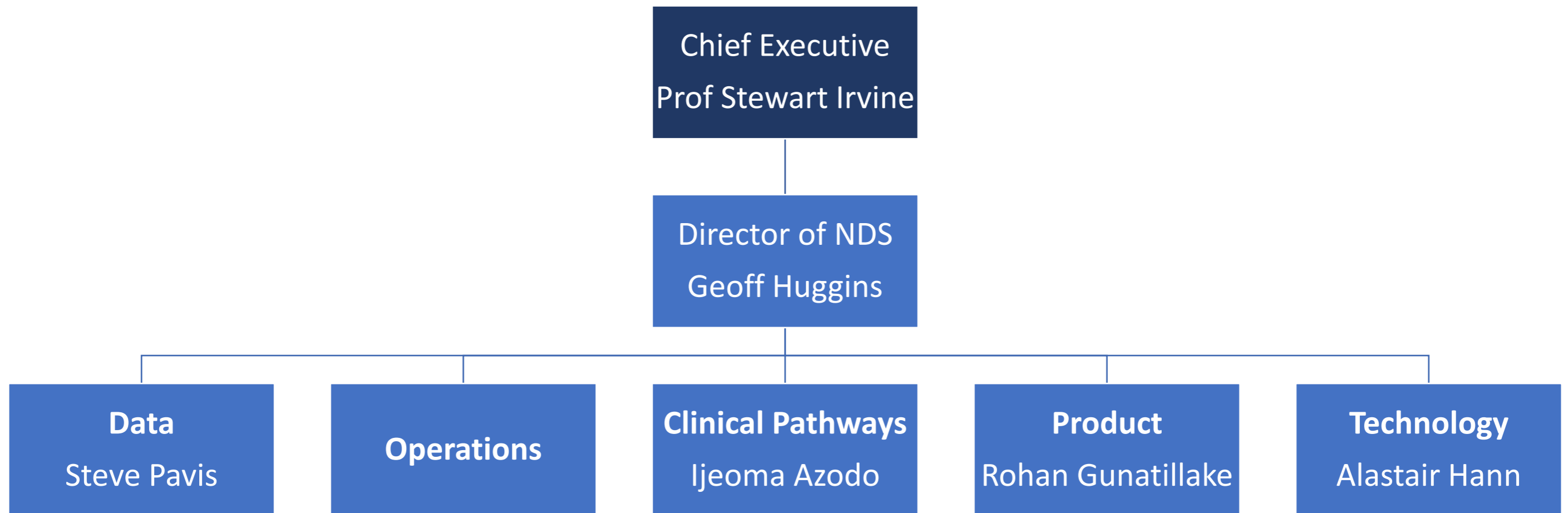


Dental Directorate

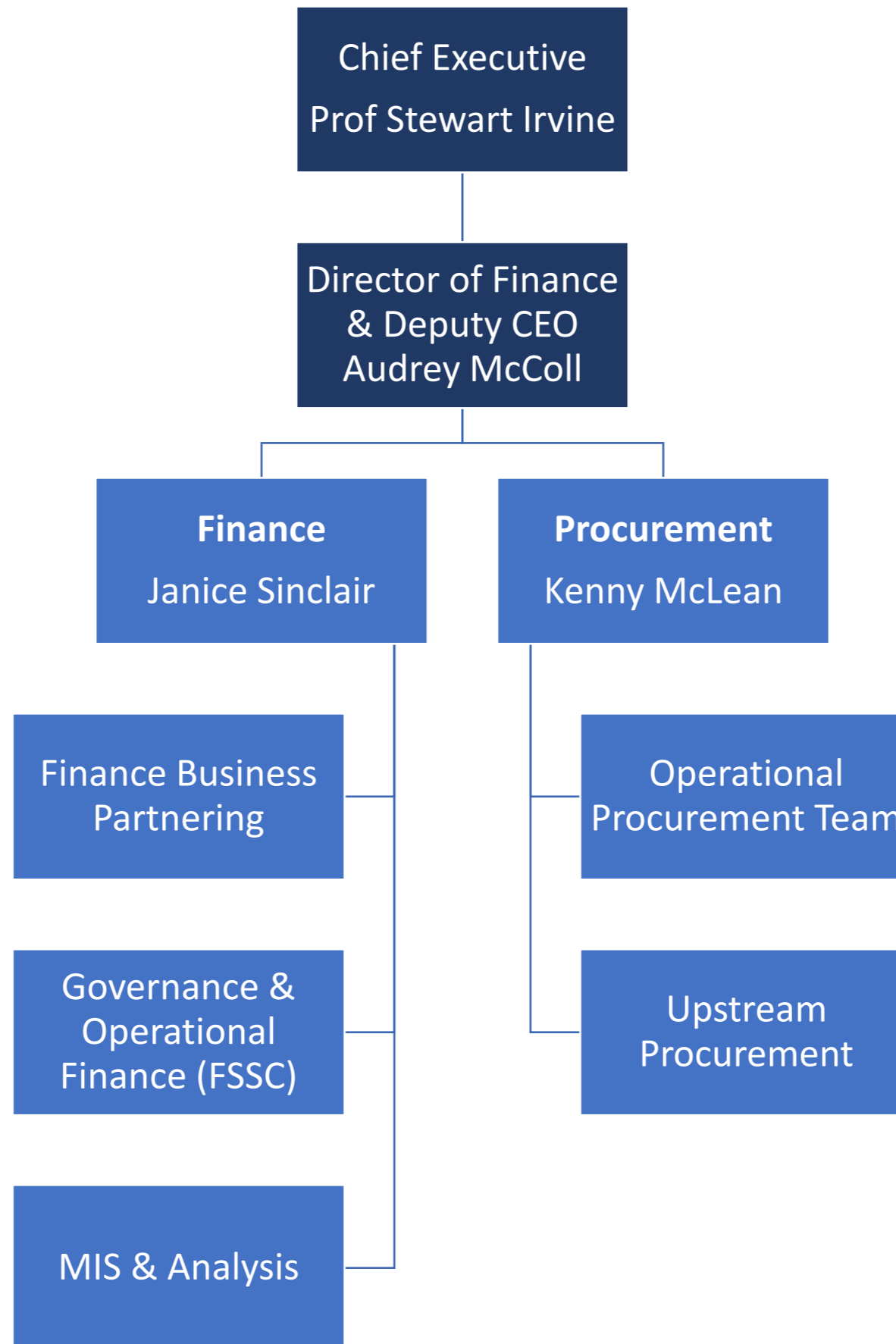


NES Digital Directorate

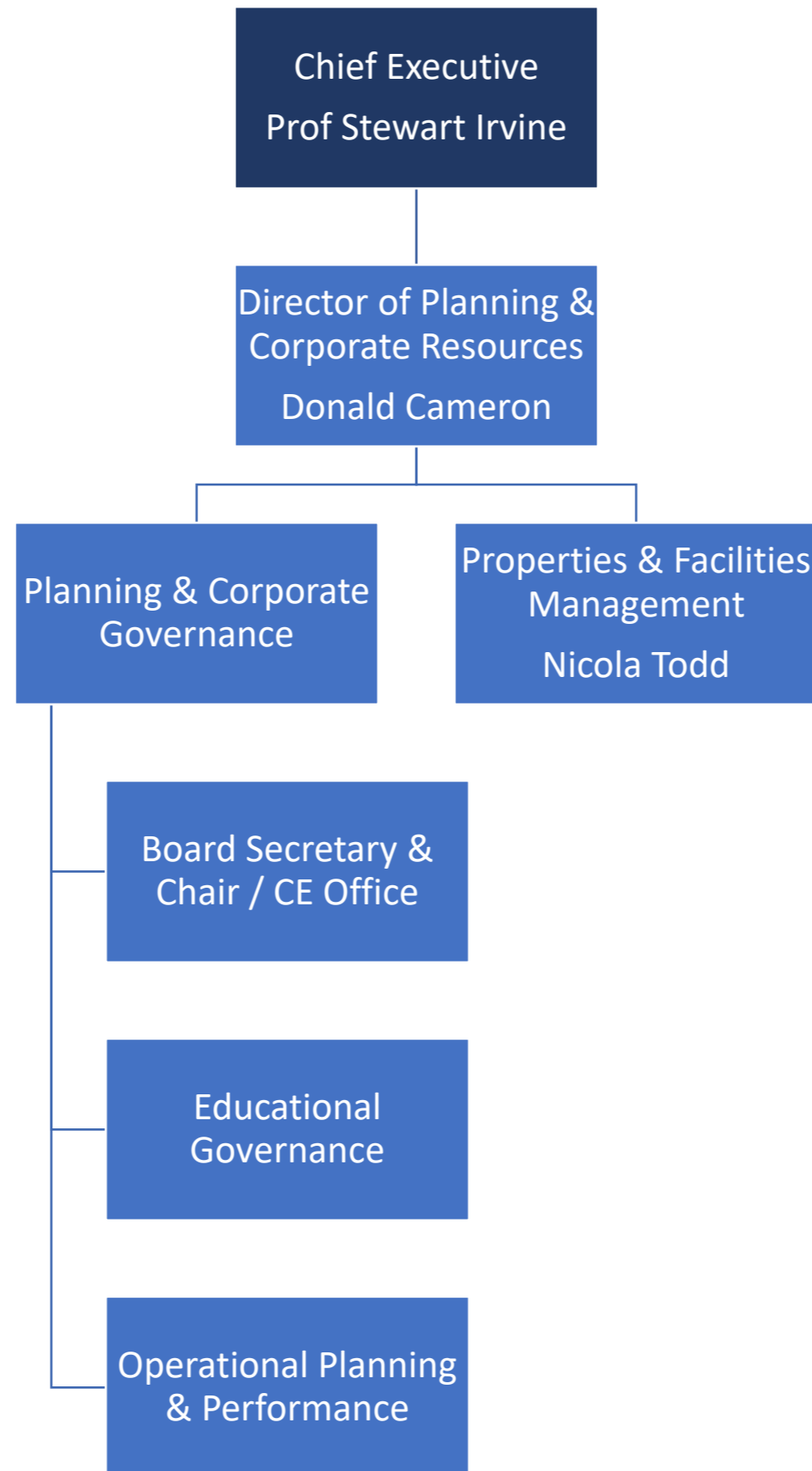




Finance Directorate



Planning & Corporate Resources Directorate



Workforce Directorate

