

# Colleague conversations

Tell me about a time when learning and development made a huge difference to your role.

These sessions have been organised exclusively for support workers with no line management responsibility.



# Colleague conversations

Your thoughts on... Welcome to our experience sharing space.

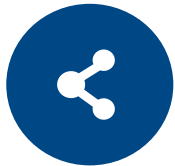
**Tell me about a time  
when learning and  
development made a  
huge difference to your  
role.**





# Online breakout rooms

- You will be automatically sent to a breakout room.
- Turn on your camera, unmute and speak or use chat in the room to communicate



## Troubleshooting tips

- Don't panic if you join a breakout room with nobody else.....
- Wait a minute or two to be sure that you are alone and there is not an electronic delay
- Use the red leave button only if you are still alone, this will end your meeting totally
- Re-join the session using your original session meeting link in email
- Technical issues, please let us know in the breakout room chat or email [nss.shscevents@nhs.scot](mailto:nss.shscevents@nhs.scot)

**Breakout room layouts may differ depending on your device or version of MS Teams**



# Conversation flow



- **Think** about the topic - 1 minute



- **Share** your experience - 1 minute per person



- **Nominate** the next person to speak



- **Discuss** in groups – 10 minutes



- **Add** ideas and thoughts to Padlet

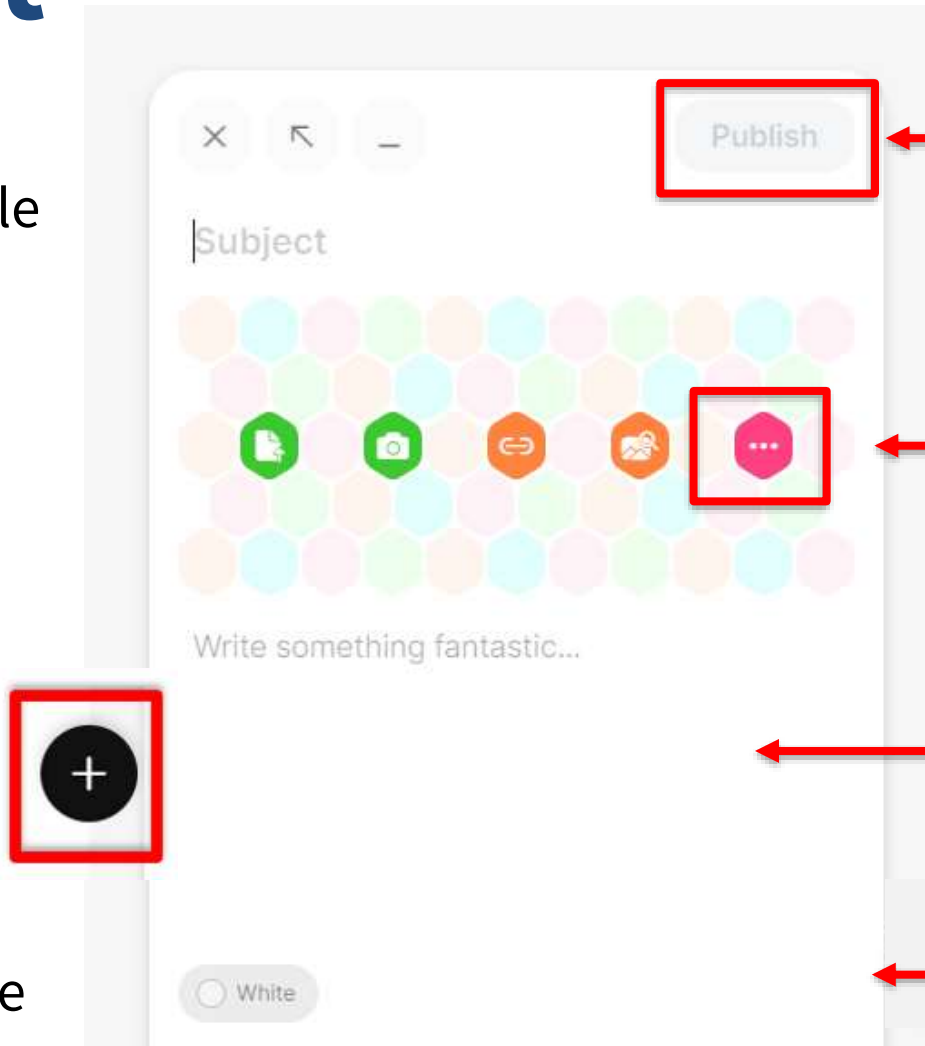
# Using Padlet

Open the link provided in your browser or on a mobile device.

If the link doesn't work in Edge or Firefox, copy and paste into Chrome.

Use the plus sign to add a post.

Reactions, voting or comments on posts may be turned on and off.



Select publish to upload to the board. Posts can be edited using ellipsis.

Add images, gifs, links, files, videos, audio, emojis and much more. Search or drag and drop onto tile area.

Write your post here. All contributions are anonymous.

Choose the background colour.

# Great conversations



Suspend judgement,  
as best you can  
Respect one another  
Share to discover

# Support Workforce Learning week 2023

## Session feedback

Please fill out our session feedback

Scan the QR code or open from your chat/padlet link

Evaluation form will take around 2 minutes to complete



This resource may be made available, in full or summary form, in alternative formats and community languages.  
Please contact us on **0131 656 3200** or email **altformats@nes.scot.nhs.uk** to discuss how  
we can best meet your requirements.



NHS Education for Scotland  
Westport 102  
West Port  
Edinburgh  
EH3 9DN  
[www.nes.scot.nhs.uk](http://www.nes.scot.nhs.uk)